

Obtained via FOIA by Judicial Watch Inc.



JEMC
10000
10000
10000



43



44



49



50



51



56



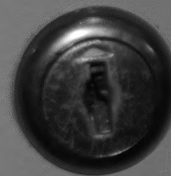
57



58



50



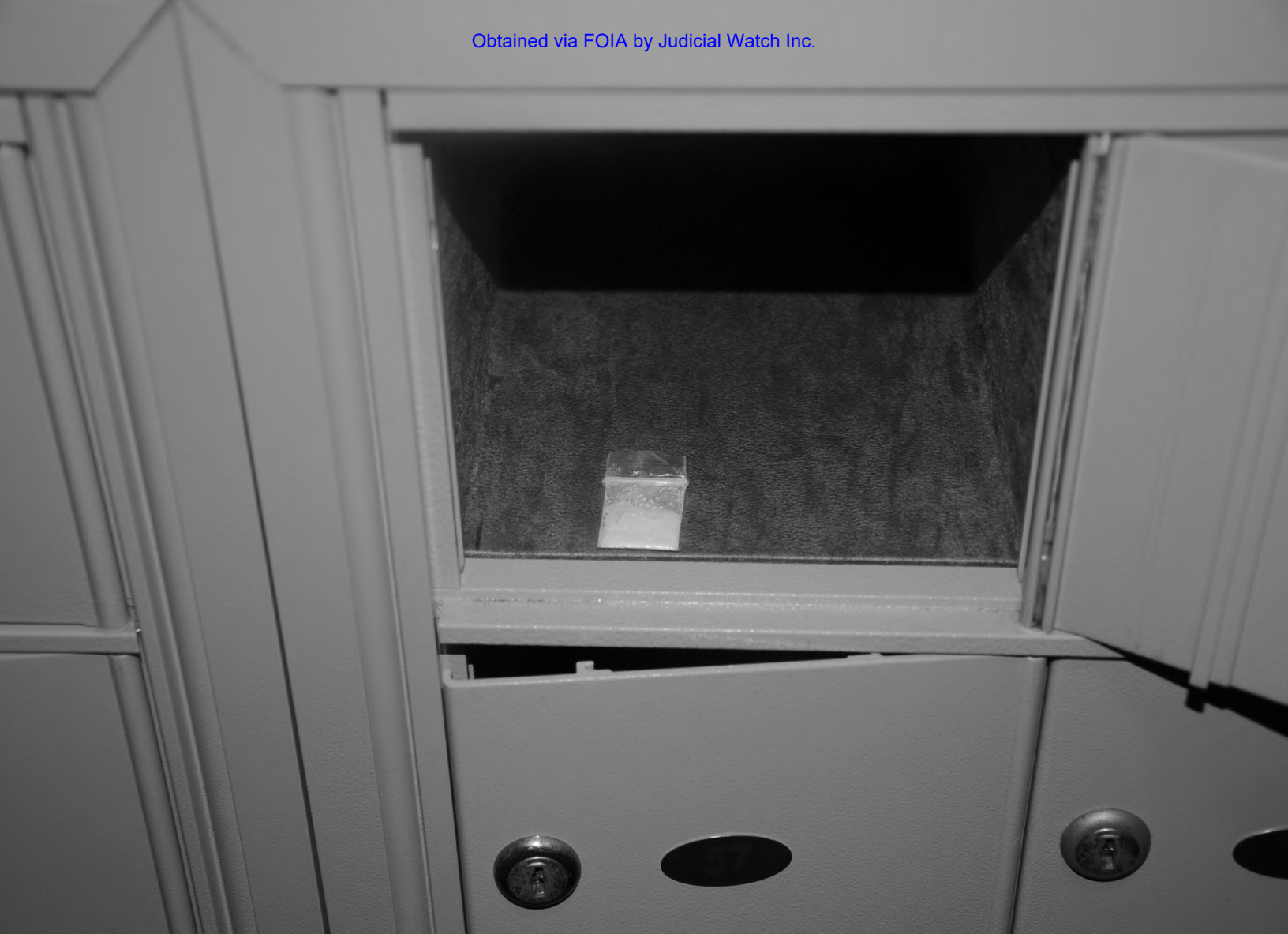


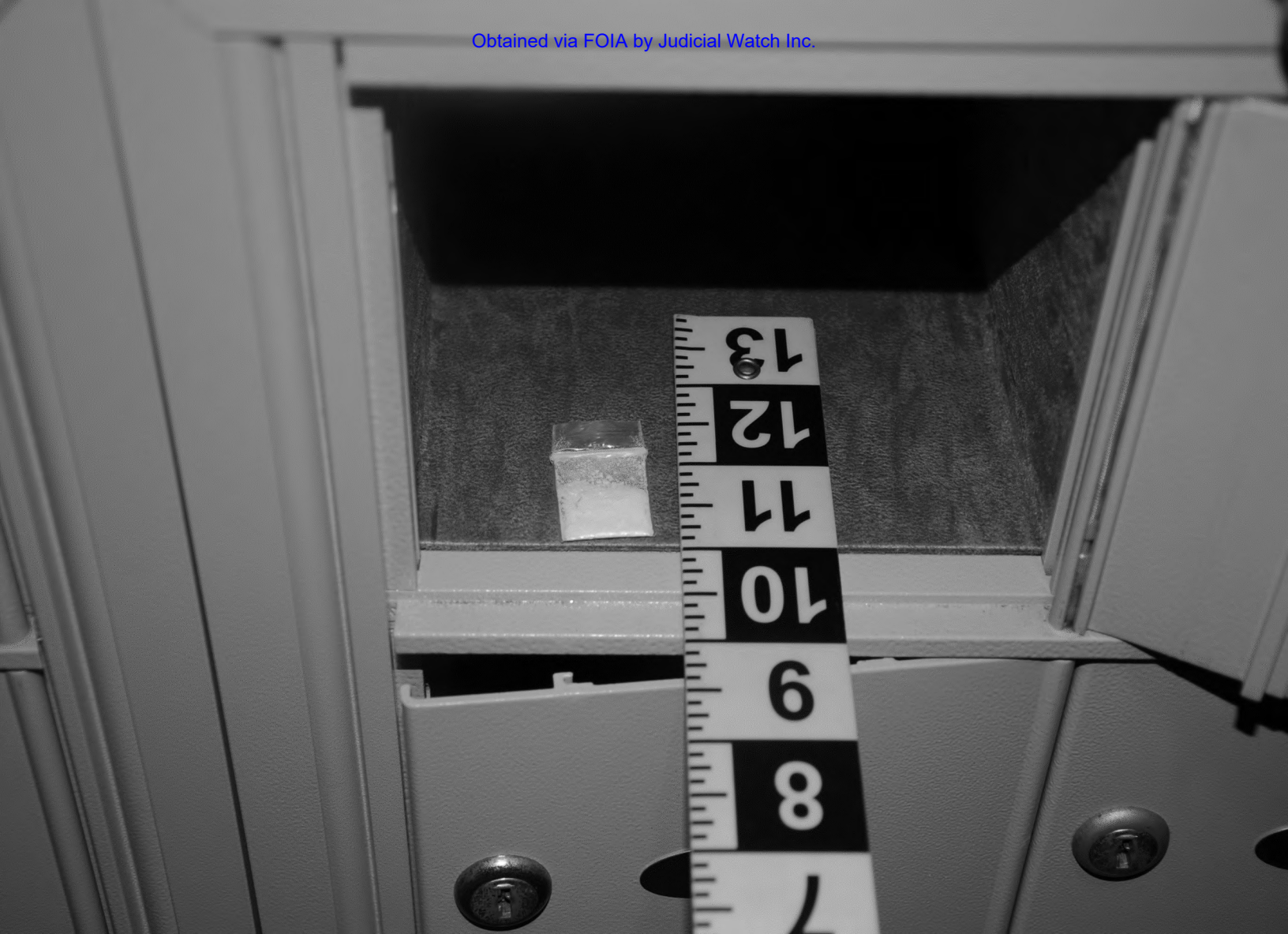
50



5







13

12

11

10

9

8

7

SIRCHIE®
NARK® COCAINE
ID SWIPE

No. NS20150 (50 each)
No. NS20650 (300 each)
No. NS21250 (600 each)

*Presumptively identify trace
amounts of
Cocaine Hcl (powder) or
Cocaine Base
(crack or freebase)*

SIRCHIE®

Products • Vehicles • Training
Phone: (919) 554-2244, (800) 356-7311
Email: sales@sirchie.com
www.sirchie.com



7/2/23

(b)(6); (b)(7)(C)

(b)(6); (b)(7)(C)

(b)(7)(E)

West Wing
unknown powder



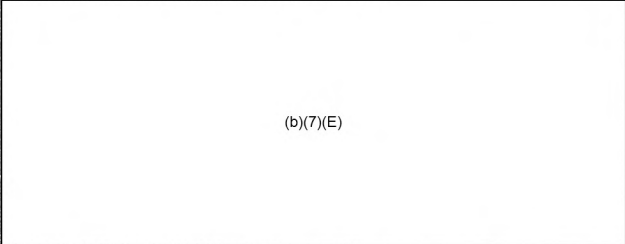
TO
NORTH
GROUNDS
←





(b)(6); (b)(7)(C)

WEST
WING
ENTRANCE



(b)(7)(E)

Processing Room

eywell

